



✉ info@zenithdeveloper.com

🌐 www.zenithdeveloper.com

📷 [zenith.developers](https://www.instagram.com/zenith.developers)



ZENITH MANARINA

An upcoming apartment project in Dubai South with a modern, resort style design.

2028 UPCOMING PROJECT

ABOUT US



Founded in 2006, Zenith rapidly rose to prominence as a premier construction, development, and property management enterprise with 15 in-house companies. Our extensive portfolio encompasses top-tier design, construction, and development, characterized by superior quality. At Zenith, we pride ourselves on offering an all-in-one property solution, leveraging our diverse in-house development services. This approach ensures streamlined project delivery, optimizing both time efficiency and cost efficiency.



OUR IN-HOUSE ACTIVITIES

We take pride in offering a range of services through our in-house team, facilities, and equipment, all under Zenith Licenses. These services include:

Real estate development of vacation homes

Architecture and interior

Full in-house construction activities

Art and handcraft design services

Customized Zenith decorative products

Home automation & smart system by Zenith

Property management & short-term lease vacation home services



MANARINA

EXPERIENCE THE GRAND OPULENCE
AT HEART OF DUBAI SOUTH

Destination Estimated Drive Time

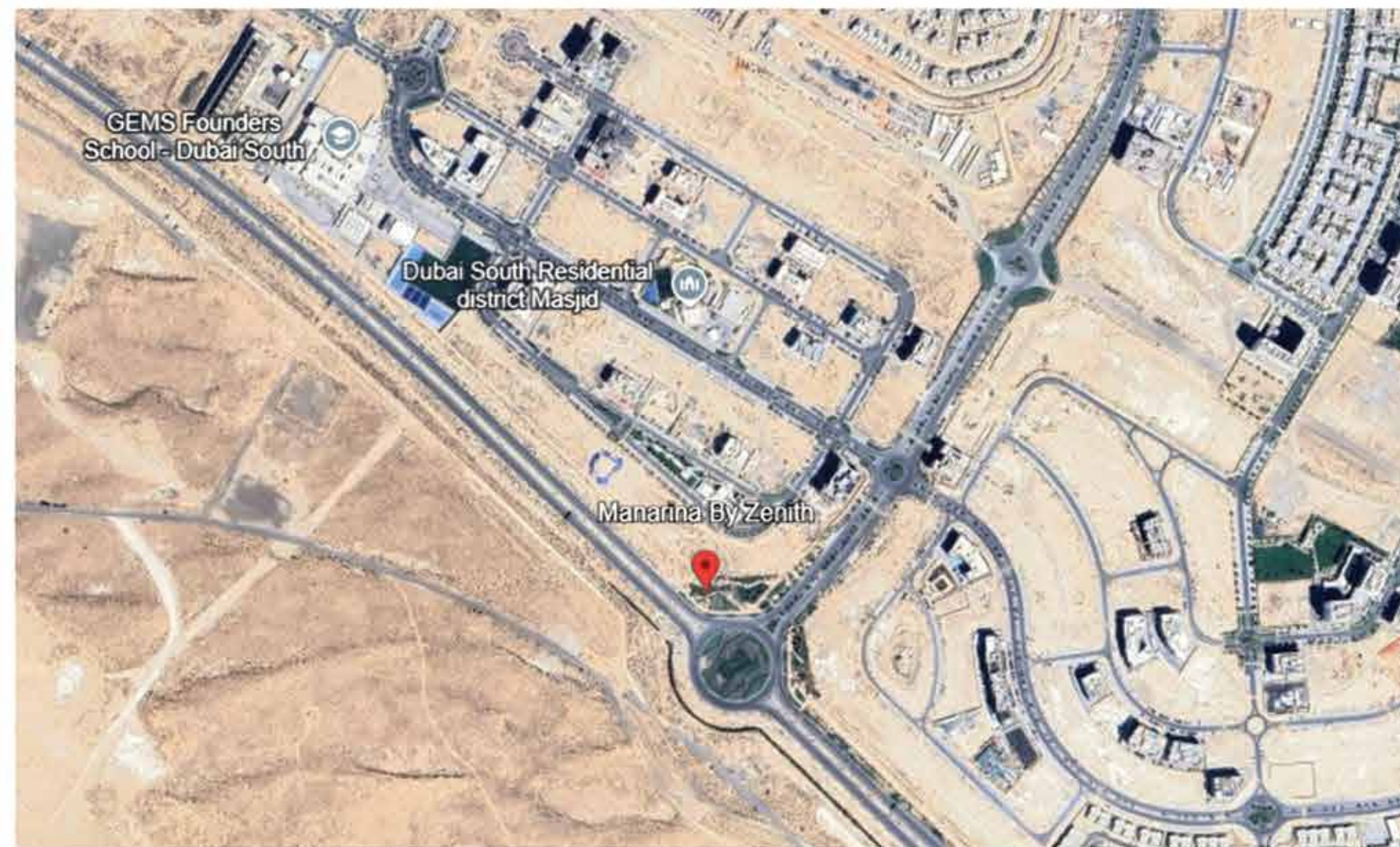
Al Maktoum International Airport (DWC)	7-10 minutes
Expo City Dubai	10-15 minutes
Ibn Battuta Mall	20-25 minutes
Dubai Marina	25-30 minutes
Palm Jumeirah	30-35 minutes
Downtown Dubai / Burj Khalifa	30 minutes



LOCATION (DUBAI SOUTH)

Zenith by Manarina is an upcoming apartment project in Dubai South, designed with a modern, fluid architectural style featuring soft curves and layered terraces. The development offers a resort inspired lifestyle with open spaces, landscaped areas, and thoughtfully planned amenities.

Blending aesthetic design with everyday functionality, Manarina creates a seamless indoor-outdoor living experience. Located in a fast growing district, it presents strong potential for both comfortable living and long term investment.



PROJECT

SPECIFICATIONS

A stunning swimming pool and dedicated leisure areas.

Residential apartments with spacious balconies.

Strategically located near the Expo 2020 Metro extension and key community parks.

Services: 24/7 Security, Car Wash, Dedicated Parking.



An aerial architectural rendering of a modern, multi-story building named Zenith Manarina. The building features a curved facade with large glass windows and balconies, illuminated from within. It is surrounded by other urban buildings, streets with cars, and a landscaped area with trees and a circular plaza. The scene is set during sunset, with a warm, golden light. The text 'ZENITH MANARINA' is overlaid in large, white, sans-serif capital letters across the center of the image.

ZENITH MANARINA

AMENITIES

Gym



Swimming Pool



Kids Play Area



Barbeque Area

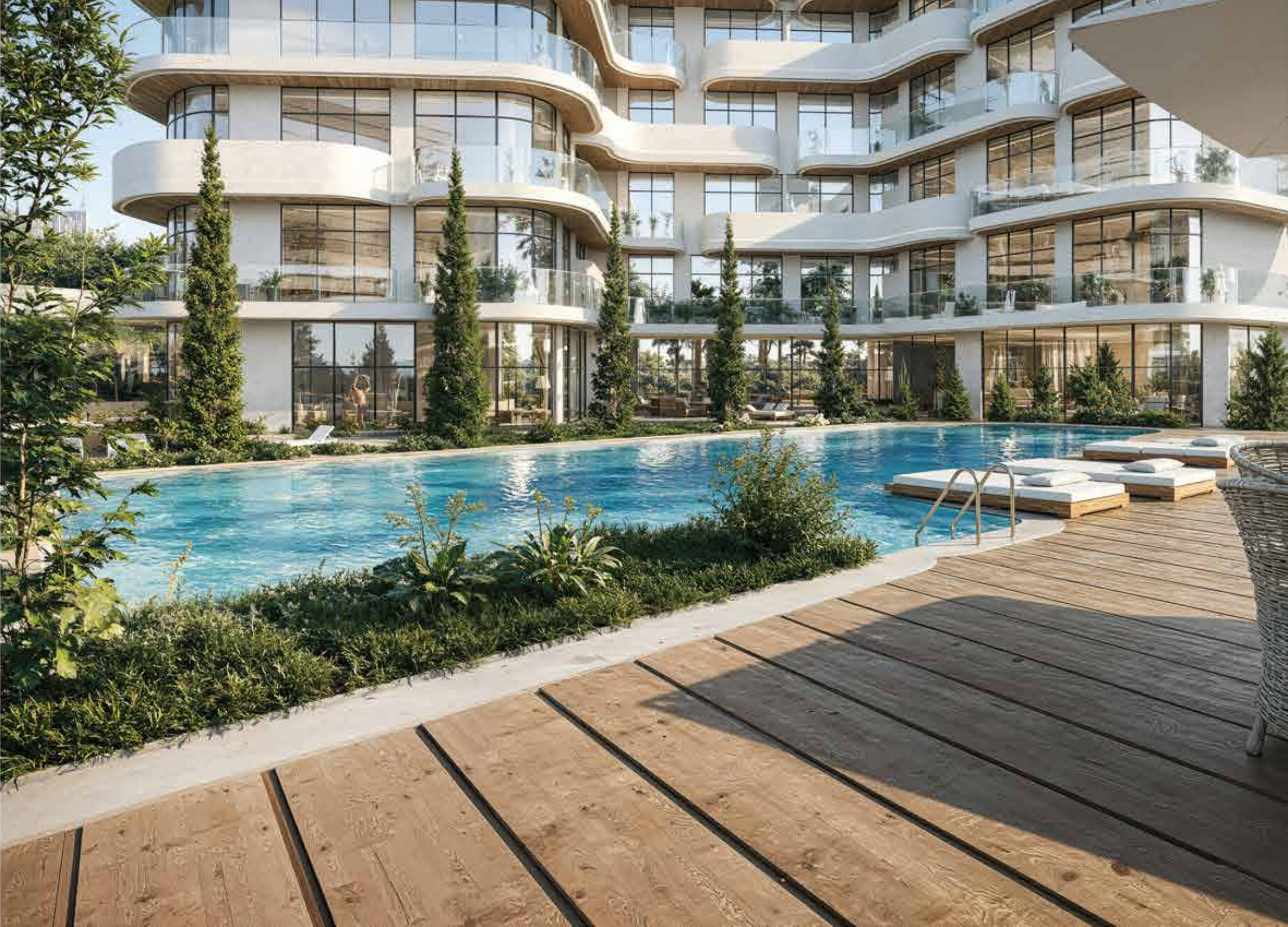


SWIMMING POOL

Description :

This refined courtyard pool is a masterclass in organic design, featuring a free-form silhouette that breaks away from traditional lines to create a natural, lagoon like retreat. Its shimmering turquoise water is elegantly framed by a sophisticated mix of warm timber decking and sandstone-toned pavers, offering a tactile and luxurious environment for relaxation.

The space is thoughtfully divided into functional zones, including a submerged tanning ledge for shallow lounging and an integrated whirlpool spa for hydrotherapy. Surrounded by lush Mediterranean inspired landscaping including manicured hedges and statuesque cypress trees the pool acts as a serene social hub. Whether viewed from the sweeping glass balconies above or enjoyed from the plush poolside loungers, it stands as a perfect balance of modern luxury and tranquil, fluid beauty.



GYM

Description :

This fitness suite is an exercise in sophisticated minimalism, where high performance functionality meets a cinematic aesthetic. Defined by a monochromatic charcoal palette and rich wood flooring, the space creates an atmosphere of quiet strength and luxury.

The design features recessed linear LED lighting that draws the eye toward floor to ceiling windows, offering a seamless visual connection to vibrant, manicured gardens. This integration of nature is complemented by indoor biophilic accents, providing a fresh contrast to the industrial precision of the heavy duty power rack and state of the art cardio equipment. By balancing professional grade utility with a serene, light-filled environment, this gym offers a curated sanctuary for both physical excellence and mental clarity.



LOBBY

This lobby is a masterpiece of Neoclassical minimalism, defined by a serene palette of cream and sand. The architectural highlight is a rhythmic series of grand arched alcoves that house both elevators and curated art, blending classical structure with modern elegance.

Anchored by a massive circular light installation and a warm wooden slat ceiling, the space feels bright yet intimate. Sculptural, low-profile furniture is arranged to encourage fluid movement and social ease. The result is a sophisticated, gallery-like entrance that offers a tranquil transition into a private sanctuary.



STYLISH INTERIOR

This interior embodies a "warm minimalist" aesthetic, where clean architectural lines meet rich, organic textures. Defined by a tonal sand and walnut palette, the living area features rhythmic wall paneling with delicate gold inlays and a plush leather sofa accented by burnt orange velvet.

The space-efficient layout seamlessly integrates a custom walnut media wall with a cozy, fluted dining nook. High-end details including marble topped coffee tables, recessed cove lighting, and biophilic accents ensure the environment feels curated yet inviting. By balancing structured wood elements with soft natural light, the design offers a sophisticated sanctuary that maximizes both style and functional living.



This space achieves warm minimalism by blending a neutral sand palette with rich walnut textures. The design features a stunning wood-paneled media wall with gold accents, perfectly integrated alongside a cozy, fluted dining nook to maximize the studio's functionality.



This open-concept interior features Scandinavian minimalism, blending light oak cabinetry with a crisp white palette. The seamless layout integrates a sleek kitchen and breakfast bar with a sun-drenched living area. Defined by clean lines and neutral textiles, the design creates a bright, airy, and sophisticated sanctuary.



This Scandinavian-style interior pairs light oak textures with a crisp white palette for a bright, airy feel. The open-concept design seamlessly connects a sleek, handleless kitchen to a sun-drenched living area. With its clean lines and neutral tones, the space offers a perfectly balanced, modern sanctuary.





A perfect blend of modern minimalism and warm elegance, this bedroom creates a calm and inviting retreat. Soft neutral tones, natural wood textures, and floor to ceiling curtains enhance the sense of comfort and sophistication, while abundant natural light adds a serene and timeless luxury to the space.





A refined balance of simplicity and sophistication, this bathroom features warm wood textures, soft stone finishes, and sleek matte black accents. Clean lines, ambient lighting, and a minimalist layout create a calm, spa-like atmosphere with a modern luxury feel.

